

“Show me the manner in which a nation or community cares for its dead and I will measure with mathematical exactness the tender sympathies of its people, their respect for the laws of the land, and their loyalty to their ideals.”

**William E. Gladstone
Four times Prime Minister of Britain
Between 1868-1894**

Someone cares



FCCPA

**FAIRFAX COUNTY
CEMETERY
PRESERVATION
ASSOCIATION, INC.
(c) 2014**



*Fairfax County
Cemetery Preservation
Association, Inc.*

FCCPA website

www.honorfairfaxcemeteries.org

Cemetery Preservation Seminar

Information provided on the need for
cemetery preservation

AND

How to survey a cemetery to record the
history and conditions of the cemetery

FCCPA MISSION STATEMENT

Our purpose is to identify, document, preserve, protect, maintain and advocate for cemeteries in our county that are: threatened by development, vandalism or neglect.

Examples

Of Damage or Neglect to

Fairfax County Family Cemeteries

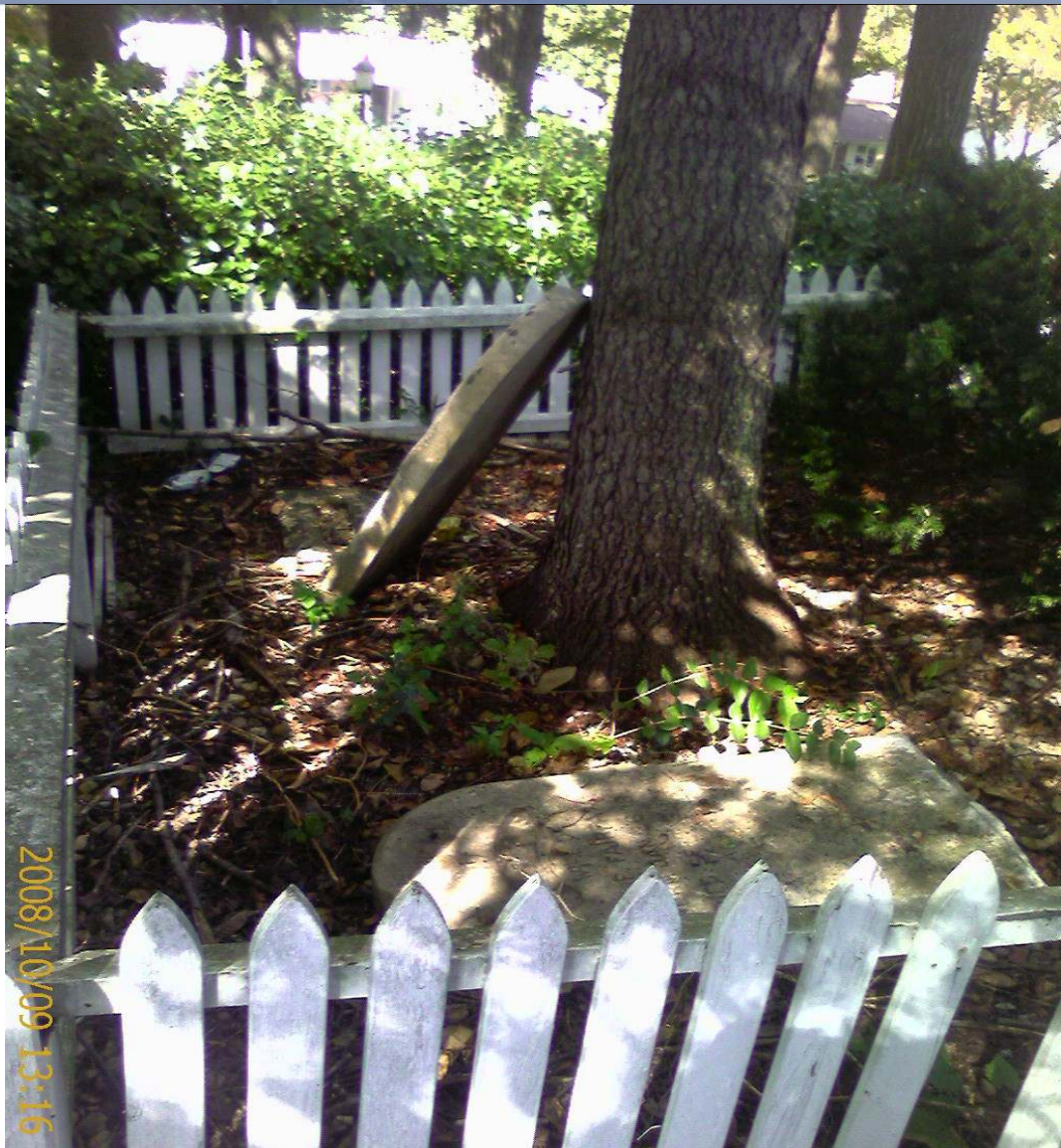
VANDALISM

**SPRAY PAINTED,
PENTAGRAMS AND INITIALS ETCHED
INTO STONE,
CHIPPED PART OF STONE, TOP OF URN
LOST
MARSHALL CEMETERY**



BENJAMIN FAIRFAX CEMETERY

**ONE MARKER BRACED UP AGAINST A
TREE
ANOTHER MARKER LYING FACE UP ON
THE GROUND
BROKEN FENCE**



KIDWELL ROBERTSON CEMETERY

**FAMILY MET WITH DEVELOPERS TO
PRESERVE THE CEMETERY AND STOP
ENCROACHMENT ON UNMARKED
GRAVES, LOCATED OUTSIDE OF FENCE**

THREATENED BY DEVELOPMENT



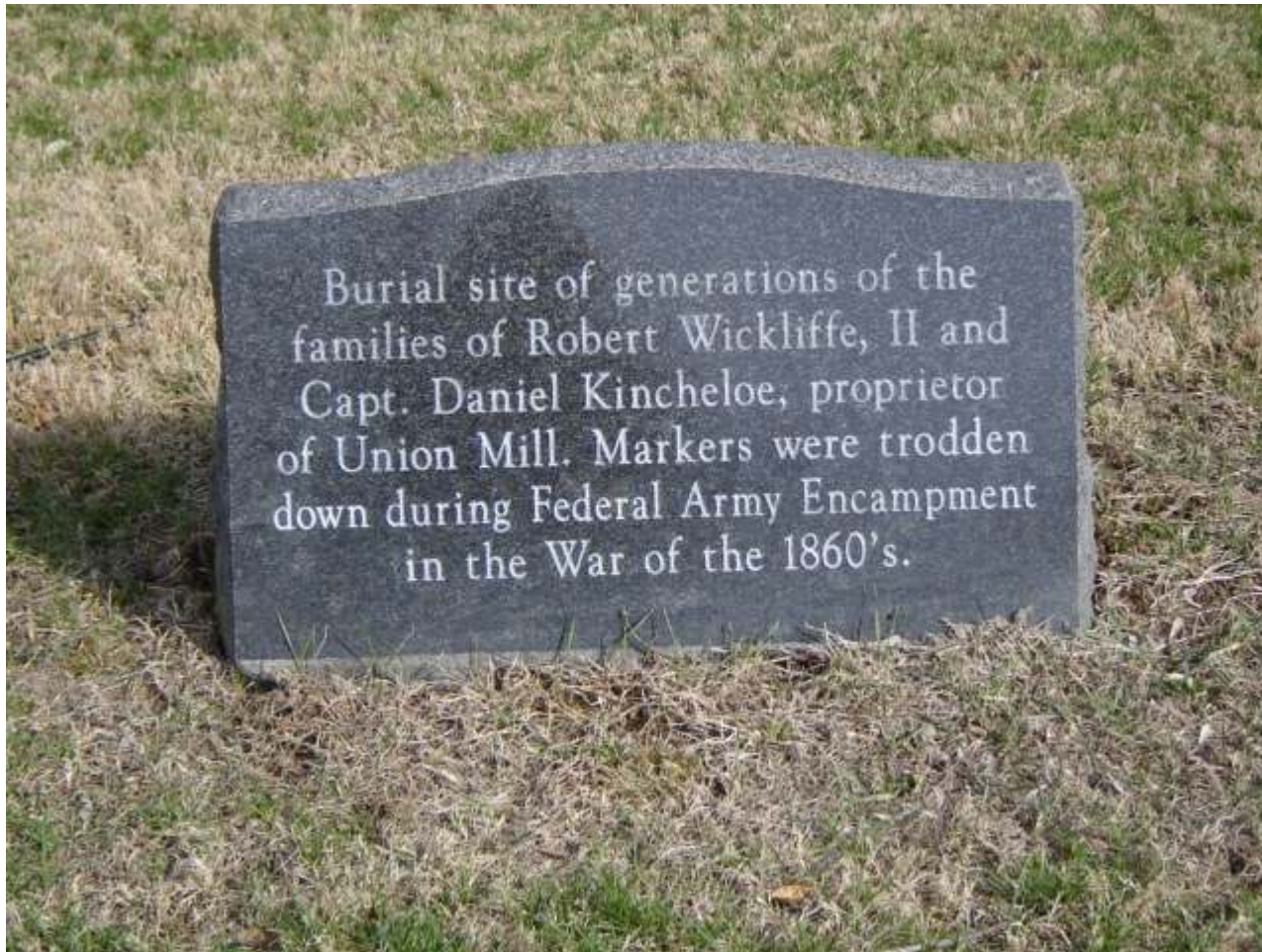


Lost Cemetery

**Wickliffe/Kincheloe
Cemetery**

Near Clifton, Virginia

**EARLY VIRGINIA SETTLERS AND
AMERICAN REVOLUTION VETERANS**



Burial site of generations of the families of Robert Wickliffe, II and Capt. Daniel Kincheloe, proprietor of Union Mill. Markers were trodden down during Federal Army Encampment in the War of the 1860's.



MARSHALL CEMETERY
BURKE, VIRGINIA

**THE VANDALISM HERE MOTIVATED
THE COMMUNITY INTO ACTION**





John and Mary Marshall

John was the first postmaster in Burke and owned a general store there. Family tradition has it that Mr. Marshall moved his bees to the second story porch of the store so that the Federals would not steal his honey. Once, during the Civil War, Mr. Marshall was arrested for suspicion of disloyalty.

Clean up at Marshall Cemetery

Took an army of volunteers





FCCCPA mission continued

Also, the Association will educate the community about the historical importance of cemeteries and how to survey and preserve cemeteries.

ON SITE CEMETERY SURVEYS

**TO LOCATE AND DETERMINE THE
CONDITION OF
OVER 400 CEMETERIES IN
FAIRFAX COUNTY, VIRGINIA.**

TYPES OF CEMETERIES

**CHURCH
COMMERCIAL
COMMUNITY
FAMILY
MILITARY
SLAVE**

**www.fairfaxcounty.gov/library/branches/vr/cem
(library website)**

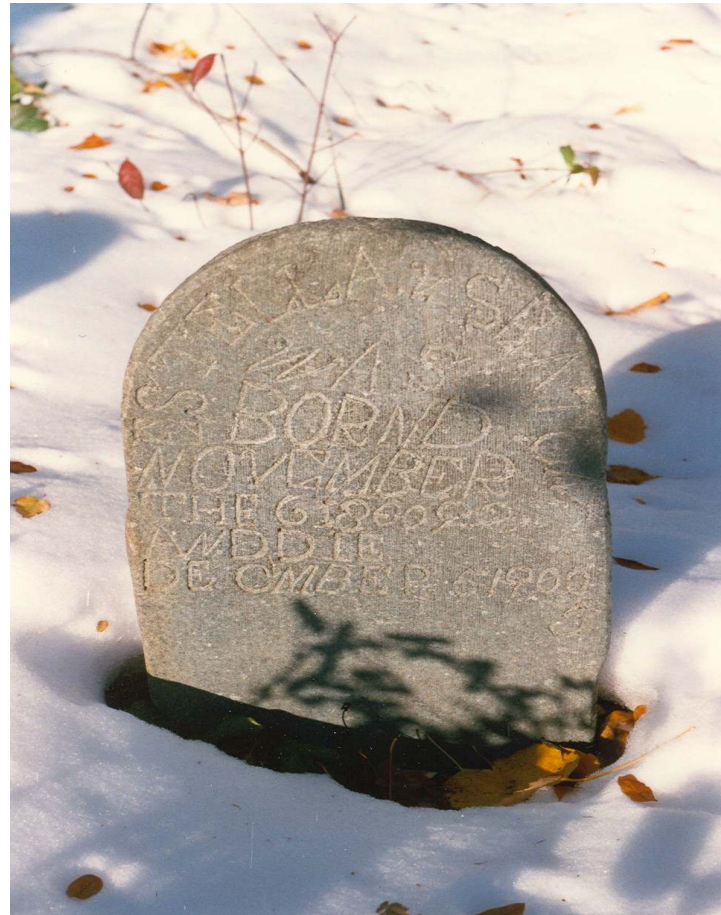
SELECT A CEMETERY TO SURVEY

**Gooding-Seaton
Cemetery
Annandale, Virginia**

William Gooding

**Farmer and hotel keeper
Gooding's Tavern
Annandale, VA**

GOODING SEATON CEMETERY 1988



1991



April 2008





DECEMBER 2008

















SURVEY PART 1

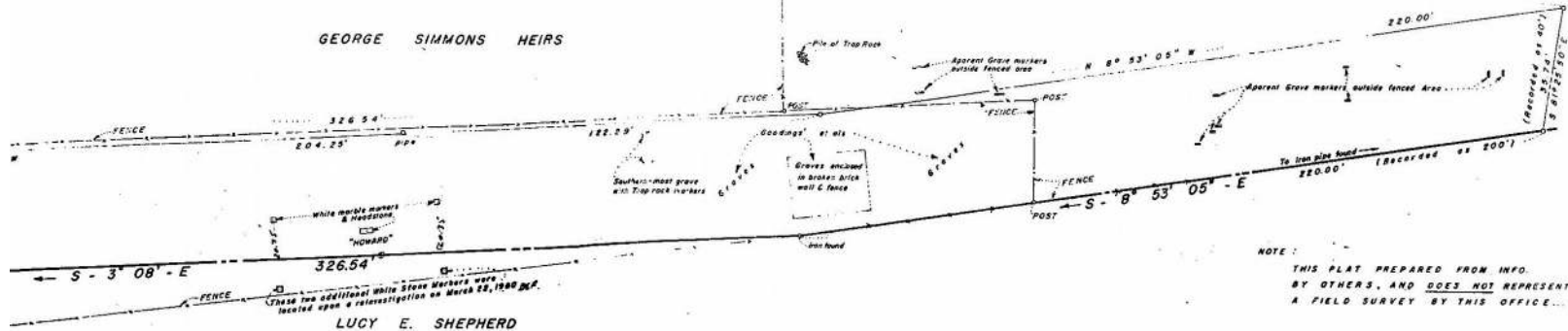
start research

- 1. CEMETERY VERTICAL FILES**
At Virginia Room Library
- 2. VA ROOM ON LINE DATA BASE**
- 3. FFX GENALOGICAL SOCIETY**
CEMETERY BOOK
- 4. TAX MAP DATA AND PLAT**
- 5. ON SITE SURVEY**

FROM THE VERTICAL FILES

**MAPS
SURVEYS
PHOTOS
LETTERS**

GEORGE SIMMONS HEIRS



White marble markers & headstone
"HOWARD"

These two additional White Stone Markers were located upon a re-investigation on March 28, 1958 D.E.P.

LUCY E. SHEPHERD

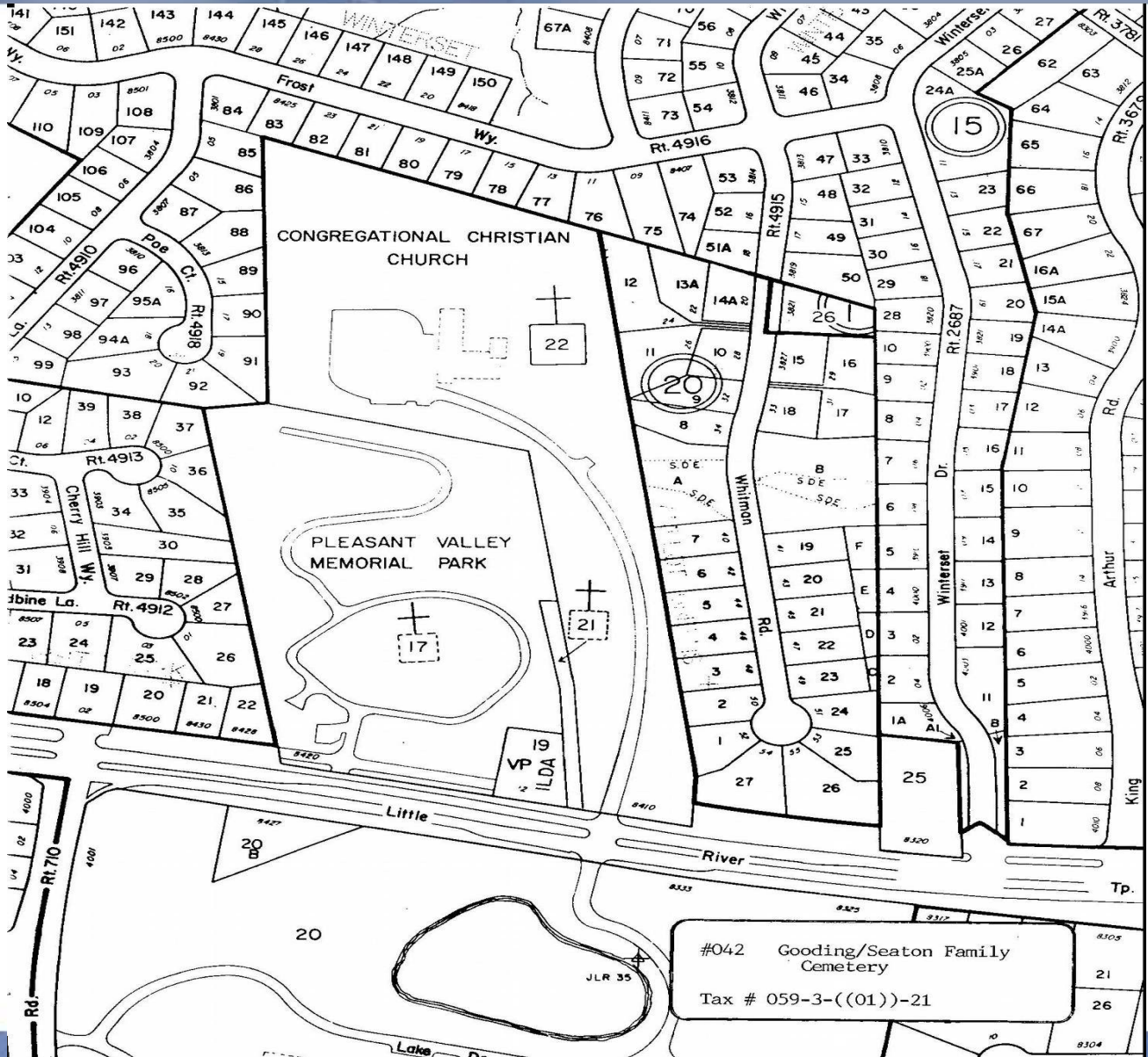
NOTE:
THIS PLAT PREPARED FROM INFO.
BY OTHERS, AND DOES NOT REPRESENT
A FIELD SURVEY BY THIS OFFICE.

Note: This plat is made from
a Transit & Stadia survey
and distances scaled will
be correct within a foot.

GOODING HEIRS GRAVE-YARD SITE
NEAR ILDA, NORTH SIDE OF LITTLE RIVER TURNPIKE RTE. 236
FAIRFAX COUNTY, VIRGINIA
SCALE: 1" = 20'
DECEMBER 11, 1956
RODGERS BROS. AND ASSOCIATES
ENGINEERS AND SURVEYORS
ANNANDALE, VIRGINIA

Revised - February 25, 1959
Revised - May 15, 1959

Handwritten initials and date: Feb 27 1959



#042 Gooding/Seaton Family Cemetery
Tax # 059-3-((01))-21

**From the vertical file, a letter
written by a Gooding descendant
in 1959**

**Includes description and location of fences,
brick walls, markers and slave burials.
Also describes homes and owners nearby.**

Virginia Room Online Cemetery Data Base

A low brick wall surrounds the graves of Peter, Mary, and Esther. Gooding descendants report that slave burials were located to the north of the family burial ground.

Fairfax Genealogical Society Cemetery Volumes

From the will of William Gooding, 19 February 1857, "the burying ground and one half acre around it, for the use of my children and their descendants as a place of burial, with the right of ingress and egress for that purpose or for preserving the graves and beautifying the grounds and for no other purpose."

Deed Book A2, page 466

From the volumes continued

“The gravestones and foot stones have been moved and remounted. They lie too close to each other to be in their original positions.”

On site surveys

Work in pairs.

Introduce oneself to the neighbors.

Wear sturdy shoes, long sleeves and pants and gloves.

What to Carry



and



AND

CAMERA
CLIP BOARD
YARDSTICK
SMALL BROOM

**GOODING SEATON SURVEY DECEMBER 2008
HOWARD MARKER**





TAKING PICTURES ISN'T EASY

**IN THE BACKGROUND IS A SURVEYOR
AT THE HOWARD MARKER.**

NOTE THE PINK JACKET



RECORD OBSERVATIONS

- **VERY OVERGROWN**
- **SOME FALLEN TREES**
 - **SOME TRASH**
- **TWO NEAT PILES OF BRICKS
(POSSIBLY OLD BRICK WALL)**
- **OLD WOODEN FENCE POST NEAR THE
ENCLOSING BRICK WALL**
- **DON'T AGREE WITH MARKERS BEING
MOVED**

MAKE SUGGESTIONS

**USE GPR TO SEARCH FOR BURIALS
INCLUDING SLAVE BURIALS.**

**ENLIST COMMUNITY IN CLEAN UP AND
PRESERVATION.**

**EDUCATE COMMUNITY ABOUT
HISTORY OF CEMETERY AND TAVERN**

IF ANY VANDALISM NOTED

**REPORT VANDALISM
IMMEDIATELY TO
OWNERS and
POLICE**

ADVICE

TAKE PICTURES FROM MANY ANGLES.

SURVEY IN LATE FALL-EARLY SPRING.

ASK NEIGHBORS FOR INFORMATION.

BE RESPECTFUL OF FLORA AND FAUNA.

MORE ADVICE

LEAVE IN PLACE.

DON'T WALK AND TALK.

VISUALIZE.

LEARN.

LEAVE IN PLACE



Kidwell Robertson cemetery

In Fairfax near Governmental Center



**WHAT LOOKS LIKE A DISCARDED
CINDER BLOCK
WITH A BUSH IN FRONT OF IT . . .**

**IS ACTUALLY PART OF A PAIR OF CINDER
BLOCKS ACTING AS GRAVE MARKERS**





Record new or unusual markers

**White bronze/zinc marker
Day family cemetery, Vienna**



Do Not

**TRY TO CLEAN OR REPAIR
A MARKER**

**UNLESS GUIDED BY A PROFESSIONAL
CONSERVATOR**

SURVEY PART 2- OPTIONAL

HISTORICAL NEWSPAPER INDEX
CENSUS

DEED/WILL BOOKS

ARCHEAOLOGICAL VERTICAL FILES

AERIAL PHOTOS

CHANCERY FILES

GPS RECORDED

From the historical newspapers

THE FUNERAL OF WILLIAM GOODING

**AND
MOSBY'S RAID**

From the historical newspapers

ALEXANDRIA GAZETTE
JANUARY 31, 1861 P. 2

“On the third Sunday of this month, we attended the funeral service and burial of Mr. Wm. Gooding, said to be the oldest person in Fairfax, and from the number of persons in attendance, we would say that he was universally beloved, and a general favorite.”

NEW YORK TIMES
AUGUST 30, 1863

**MOSBY ATTACKS SUTLER'S TEAM OF
WAGONS AT GOODING'S TAVERN.
MOSBY IS REPORTED MORTALLY
WOUNDED.**





1860 CENSUS

WILLIAM GOODING

91 YEARS OLD, MALE, WHITE

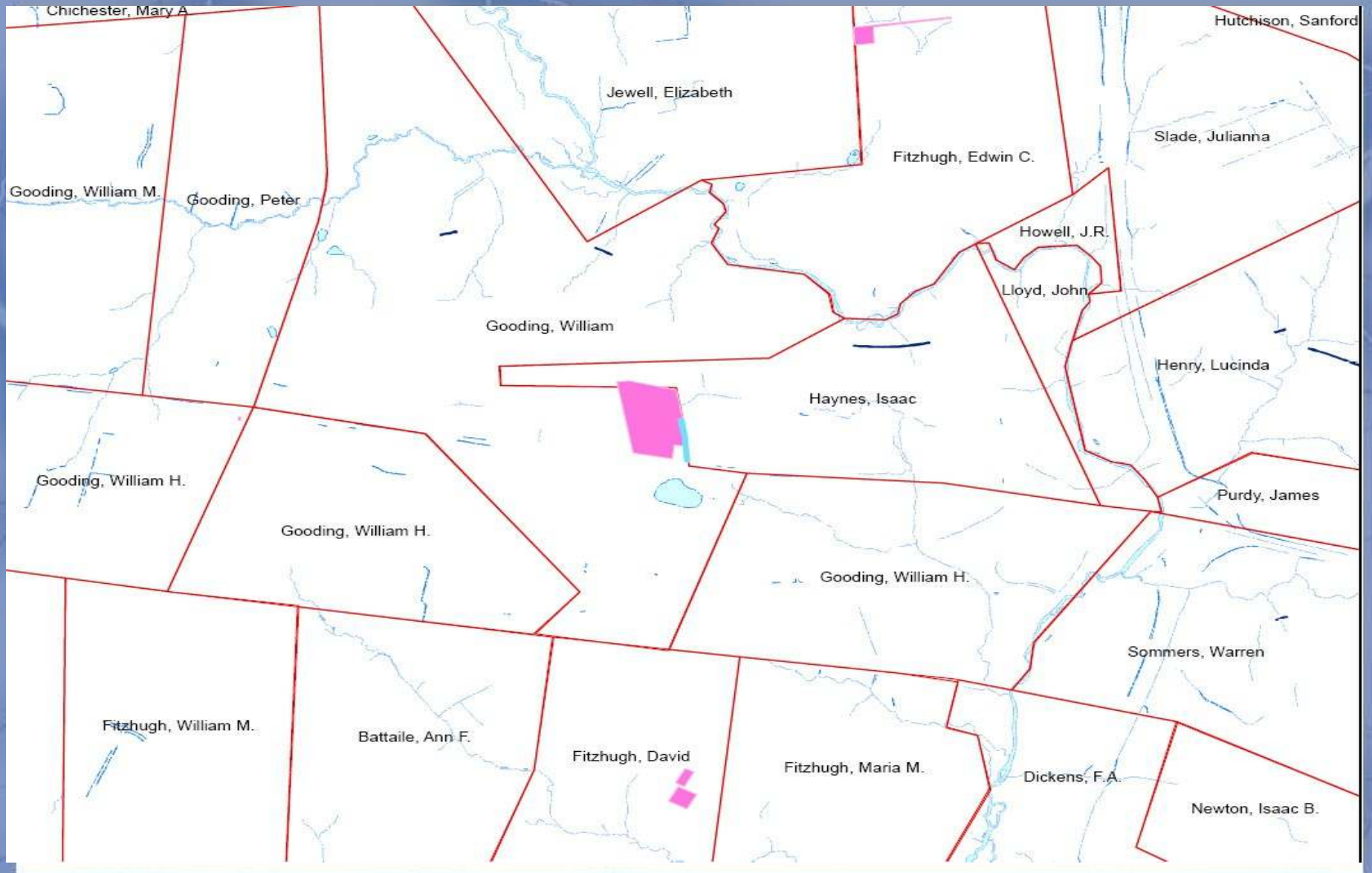
HOTEL KEEPER

\$20,000 VALUE REAL ESTATE

\$20,000 VALUE PERSONAL ESTATE

- **ARCHEALOGY VERTICAL FILES**

property boundary maps
title/ deed disputes and records
copies of wills, etc.



From James Lee Center Archaeological files

1937, 1954 and 2007 aerial views are
available

FCCPA

**FAIRFAX COUNTY
CEMETERY PRESERVATION
ASSOCIATION, INC.**

NEEDS YOU !!

www.honorfairfaxcemeteries.org

ADOPT A CEMETERY

**ENLIST ORGANIZATIONS TO
PROTECT AND PRESERVE
THE CEMETERY**

**REGULARLY CLEAR AROUND
MARKERS AND CEMETERY**

PICK UP TRASH

REPORT VANDALISM

FCCPA

**QUESTIONS and
ANSWERS**